

PROTECTION OF PERSONAL INFORMATION

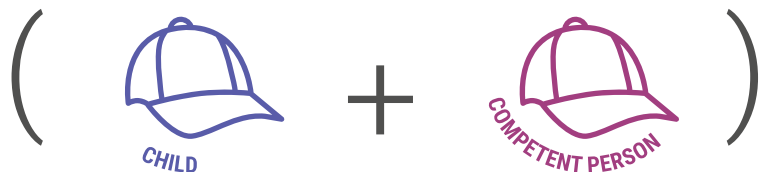
Implementation of the Conditions for Lawful Processing

Abbreviations & Roles	3
Relationships	4
Compliance Framework	5
Stage 1: Establish Compliance	6
Information Officer	6
Human Resources	7
Contracts	7
PI Security	8
PI Processing Planning	9
DS participation Planning	10
Publication of Info of RP (Notify)	10
Risk Management (Best Practice Procedures)	11
Stage 2: Collection Stage	12
Information Quality	12
Communication to DS	12
Stage 3: Compliance Continuity	13
Human Resources	13
Integrity	13
Breaches	14
DS Objections & Corrections	14
Review & Update	15
Risk management	15
Updated Information	15
Confidentiality Measures	16
Stage 4: Post-use Stage	17
Destruction of PI	17
Restriction (archiving)	17
Online Courses	18

ABBREVIATIONS & ROLES

PI	Personal Information
DS	Data Subject
RP	Responsible Party
IO	Information Officer
DIO	Deputy Information Officer
IR	Information Regulator
LIA	Legitimate Interest Assessment
PIIA	Personal Information Impact Assessment
NDA	Non-Disclosure Agreement

**The Patient
&
The Client**



The Practice



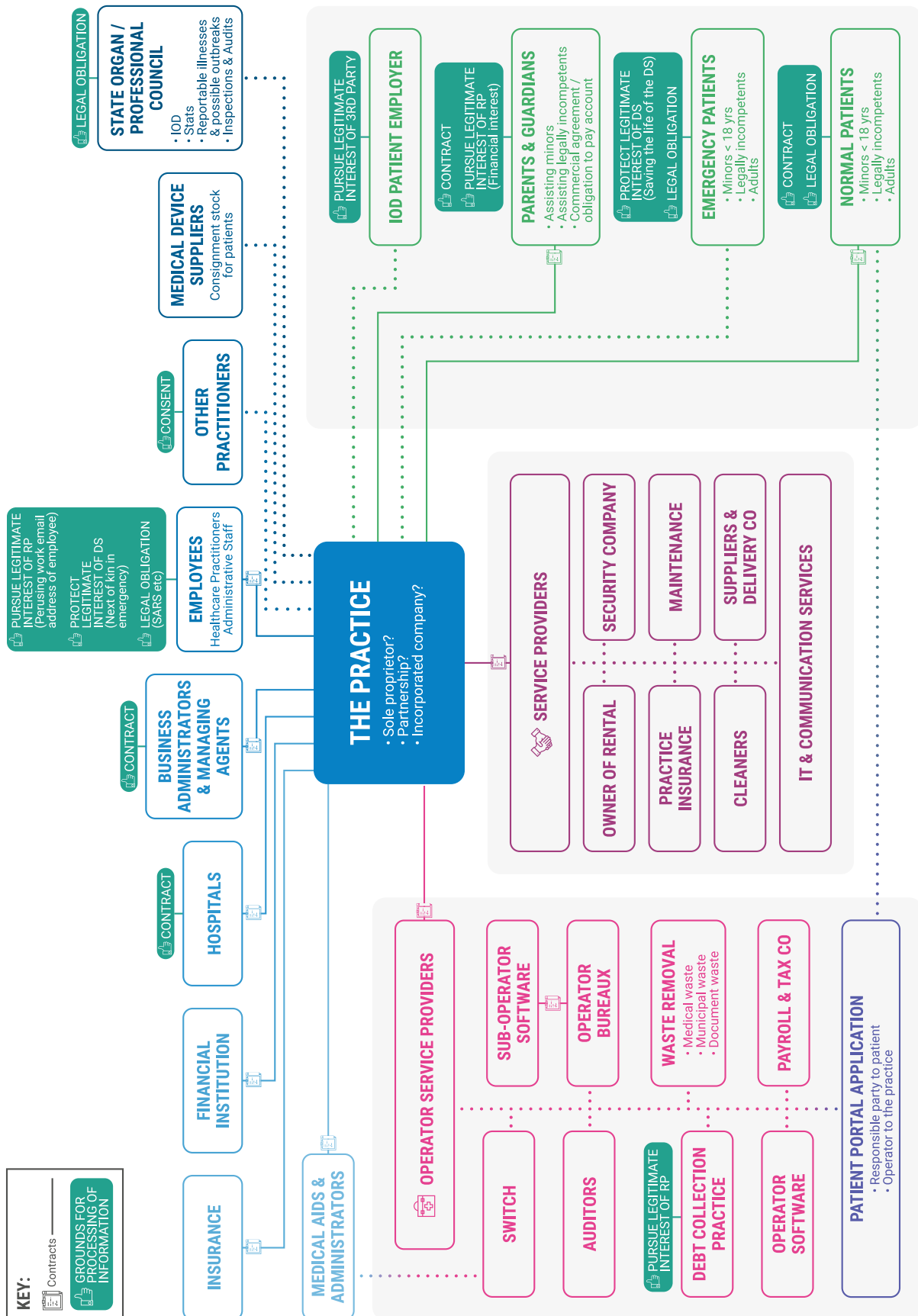
Third Parties



ENFORCERS OF THE PROVISIONS OF THE POPIA



RELATIONSHIPS

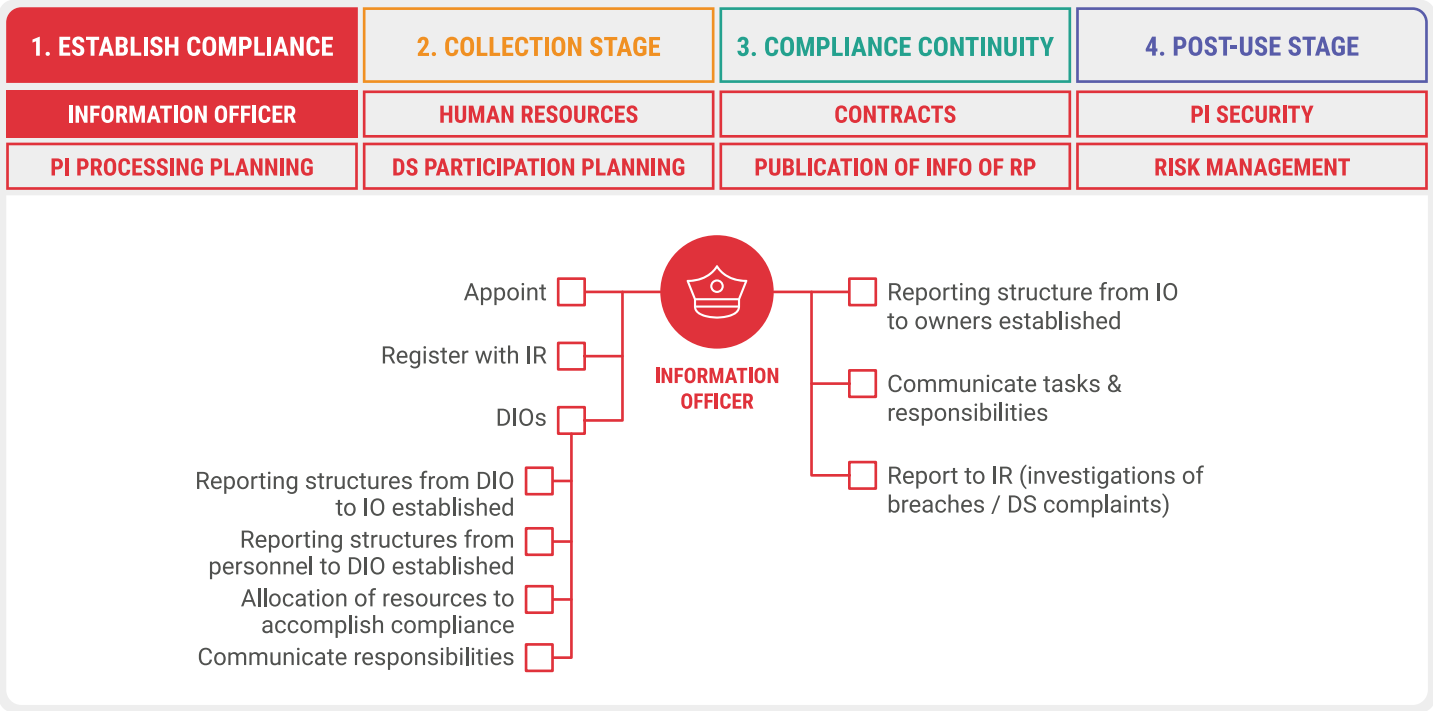


COMPLIANCE FRAMEWORK



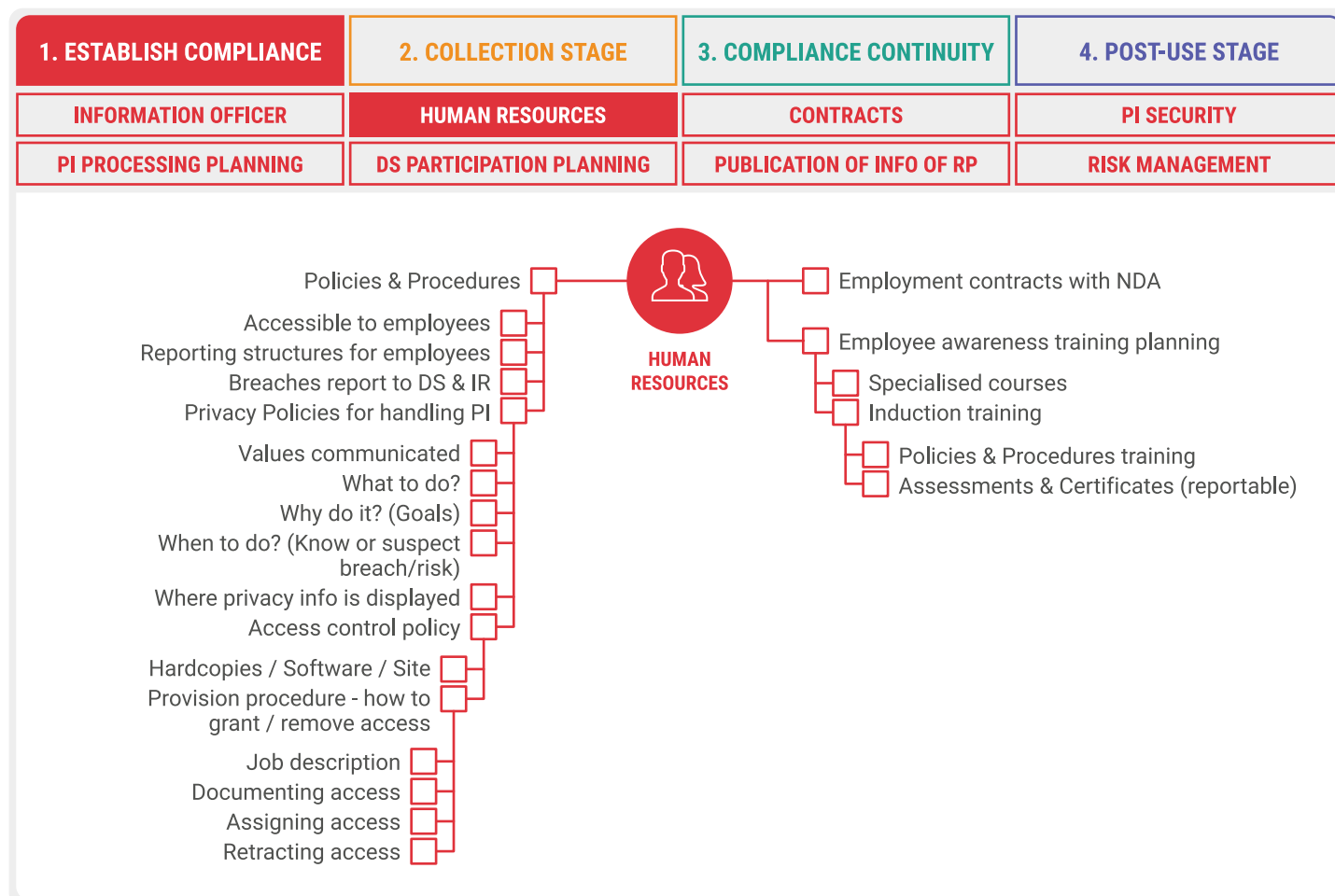
STAGE 1: ESTABLISH COMPLIANCE

INFORMATION OFFICER

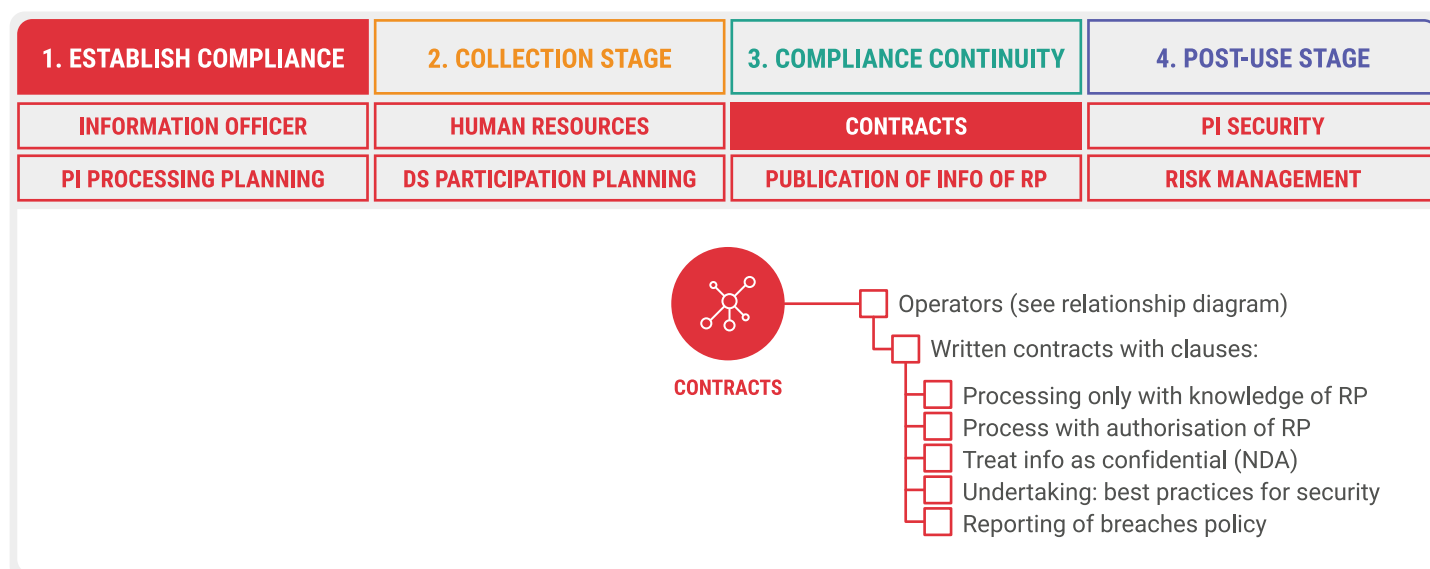


STAGE 1: ESTABLISH COMPLIANCE

HUMAN RESOURCES

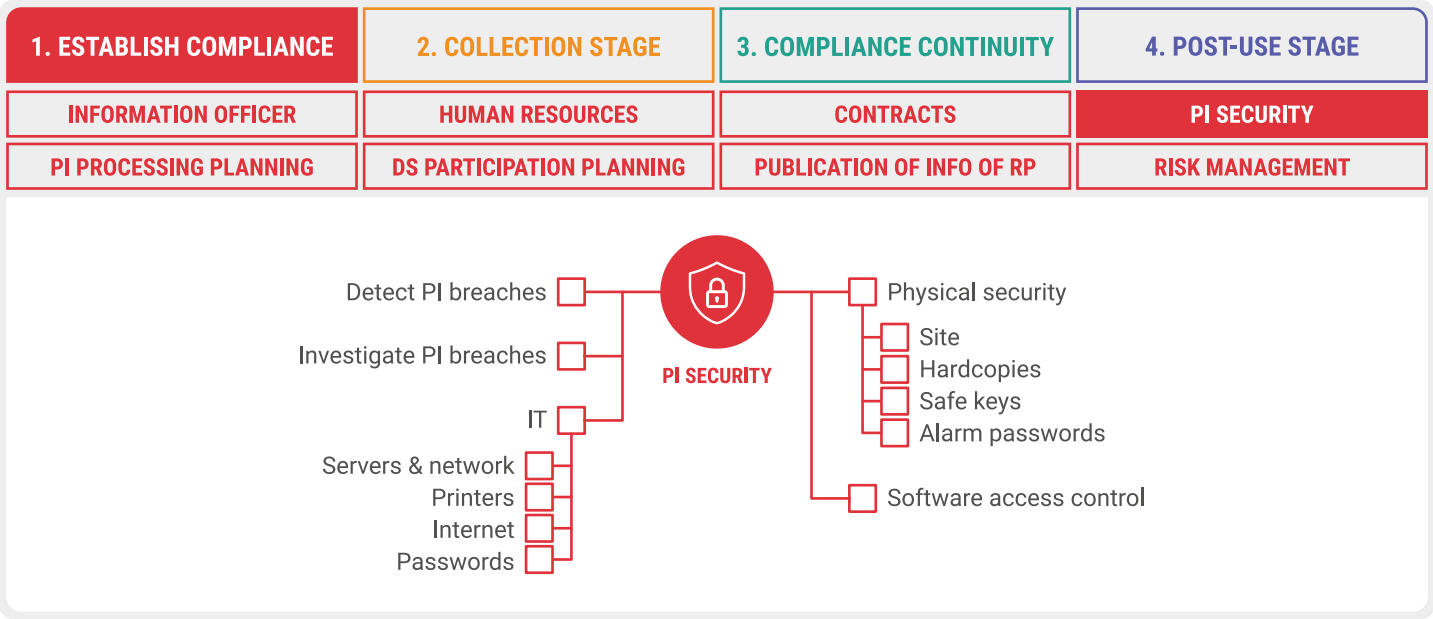


CONTRACTS



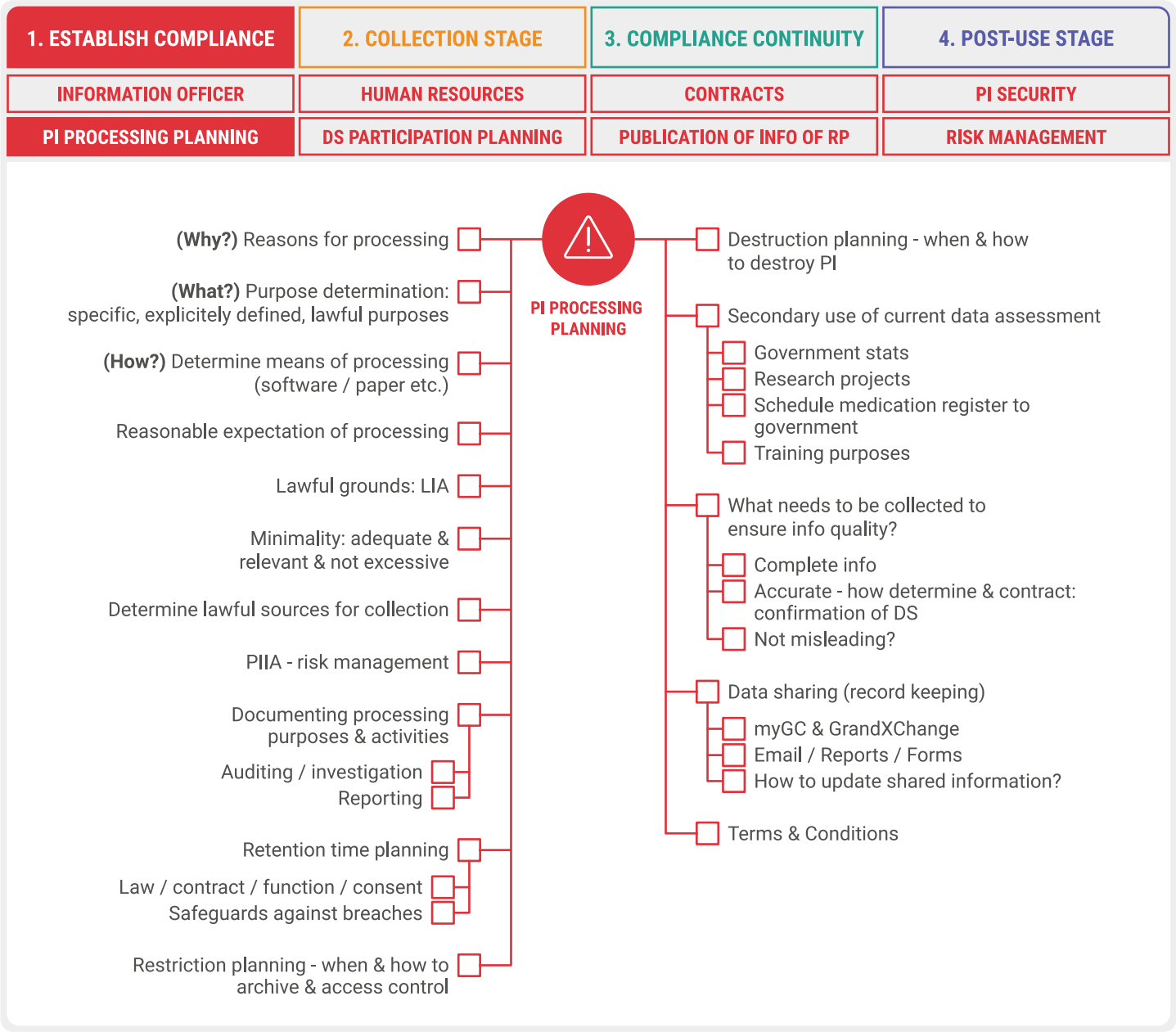
STAGE 1: ESTABLISH COMPLIANCE

PI SECURITY



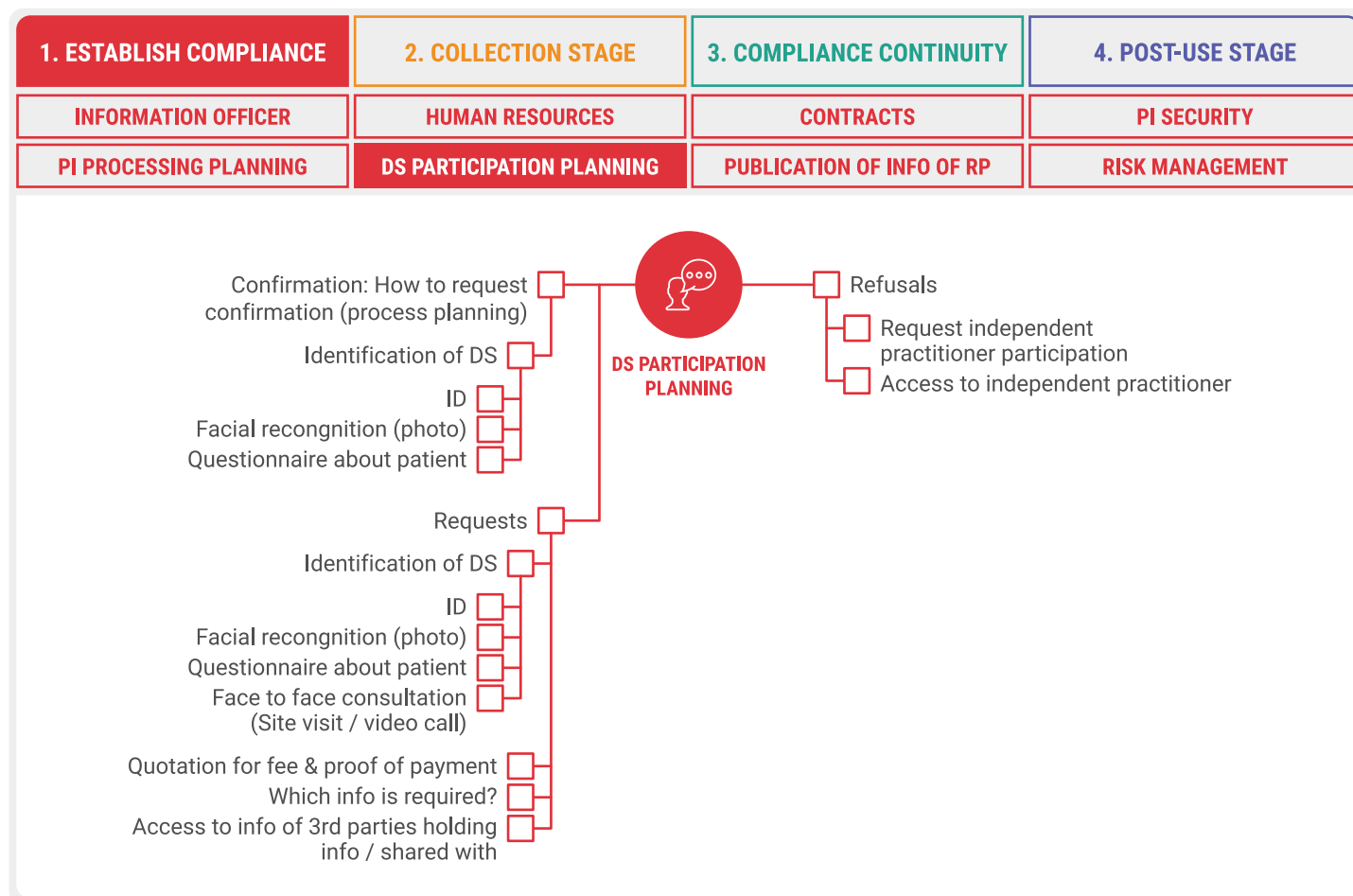
STAGE 1: ESTABLISH COMPLIANCE

PI PROCESSING PLANNING

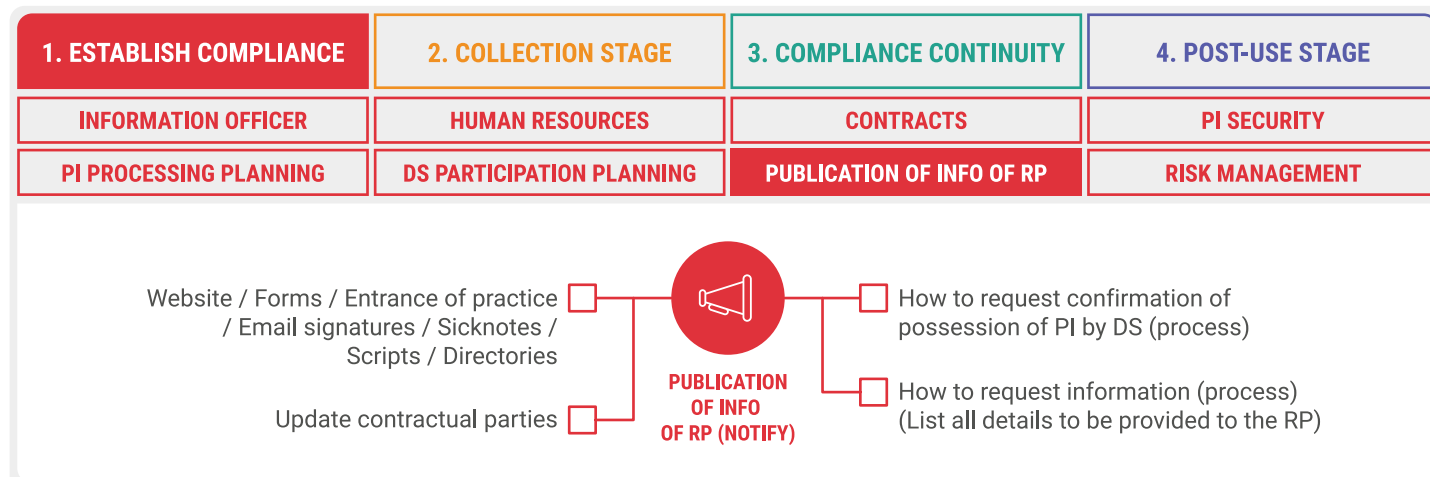


STAGE 1: ESTABLISH COMPLIANCE

DS PARTICIPATION PLANNING



PUBLICATION OF INFO OF RP (NOTIFY)



STAGE 1: ESTABLISH COMPLIANCE

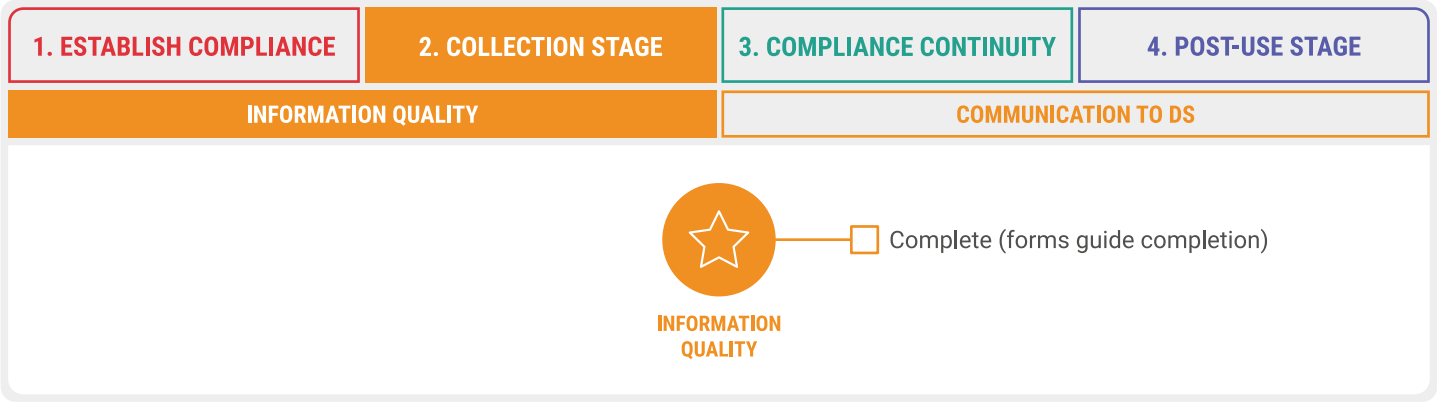
RISK MANAGEMENT (BEST PRACTICE PROCEDURES)

1. ESTABLISH COMPLIANCE	2. COLLECTION STAGE	3. COMPLIANCE CONTINUITY	4. POST-USE STAGE
INFORMATION OFFICER	HUMAN RESOURCES	CONTRACTS	PI SECURITY
PI PROCESSING PLANNING	DS PARTICIPATION PLANNING	PUBLICATION OF INFO OF RP	RISK MANAGEMENT

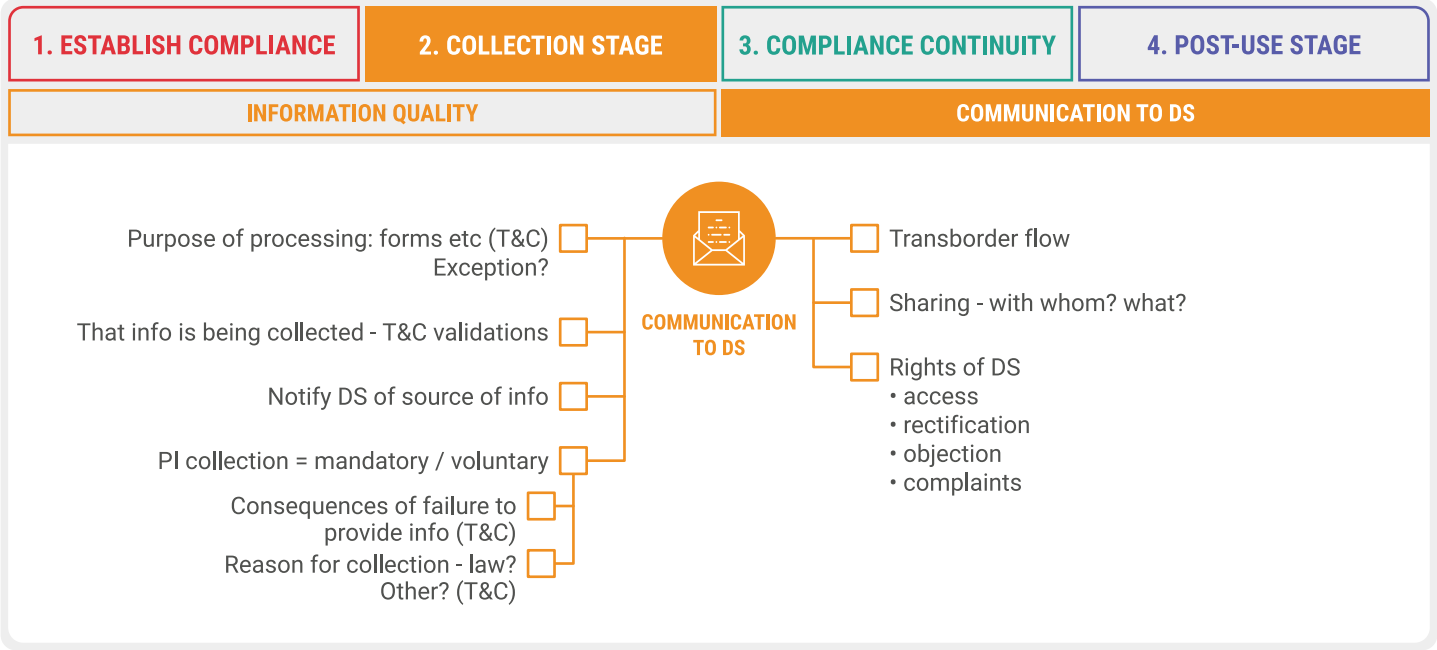
The flowchart illustrates the Risk Management (Best Practice Procedures) process. It begins with the step 'Identify internal & external risks to PI', followed by a red square icon, a red circle icon containing a magnifying glass, and another red square icon, leading to the final step 'Establish & verify safeguards'. The central red circle icon is labeled 'RISK MANAGEMENT (BEST PRACTICE PROCEDURES)'.

STAGE 2: COLLECTION STAGE

INFORMATION QUALITY

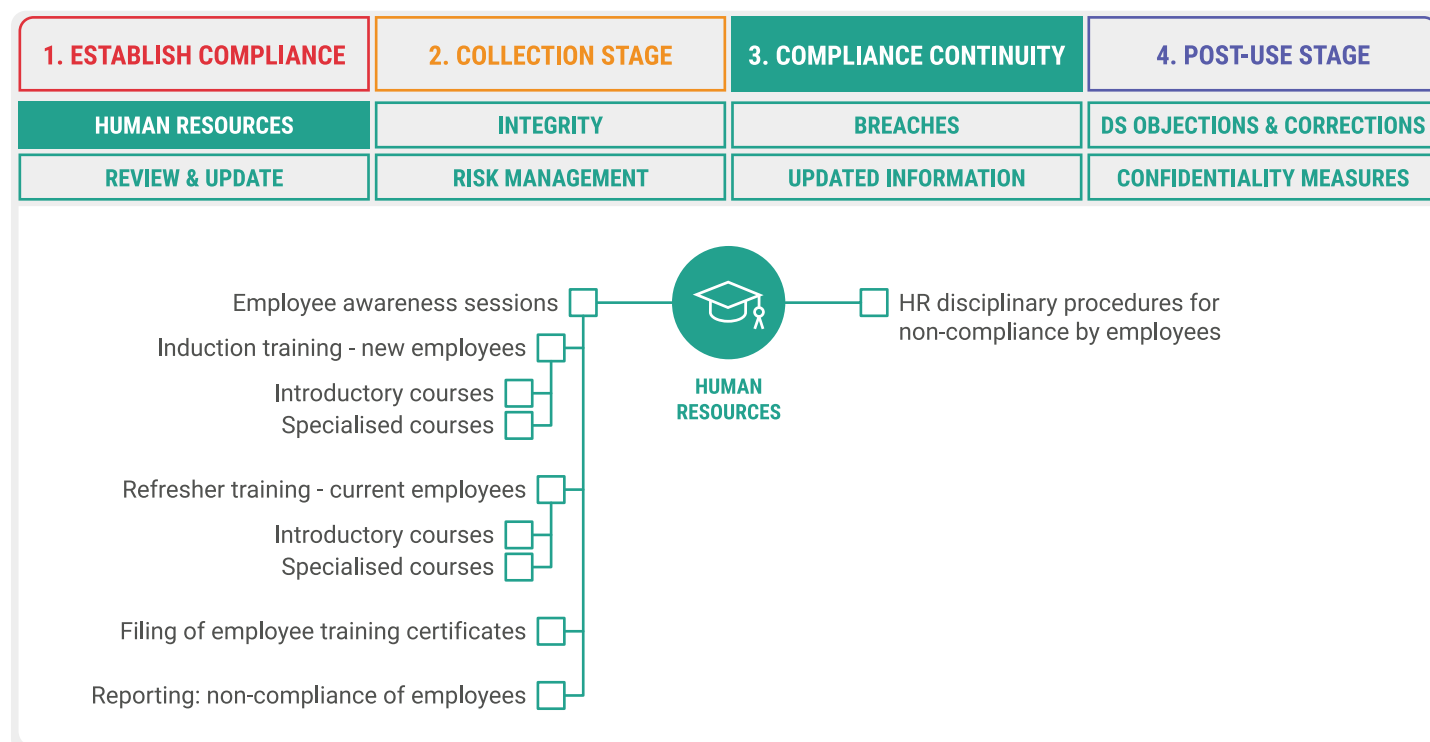


COMMUNICATION TO DS

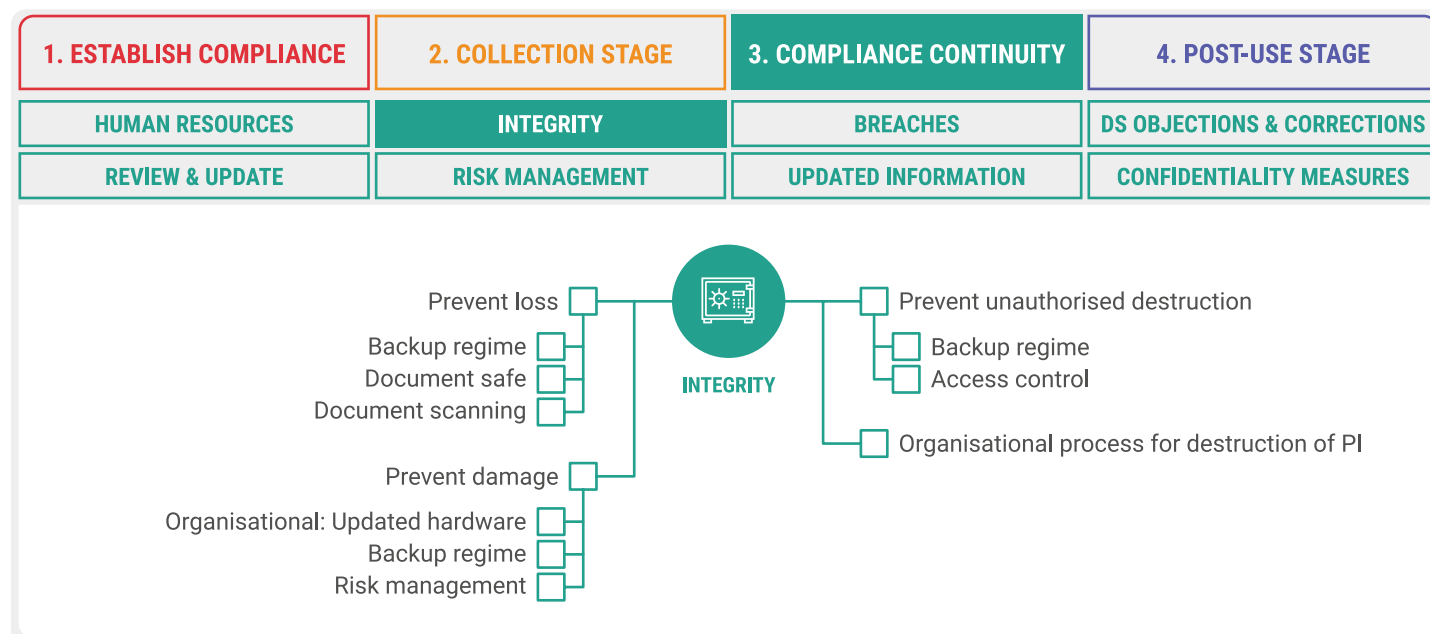


STAGE 3: COMPLIANCE CONTINUITY

HUMAN RESOURCES

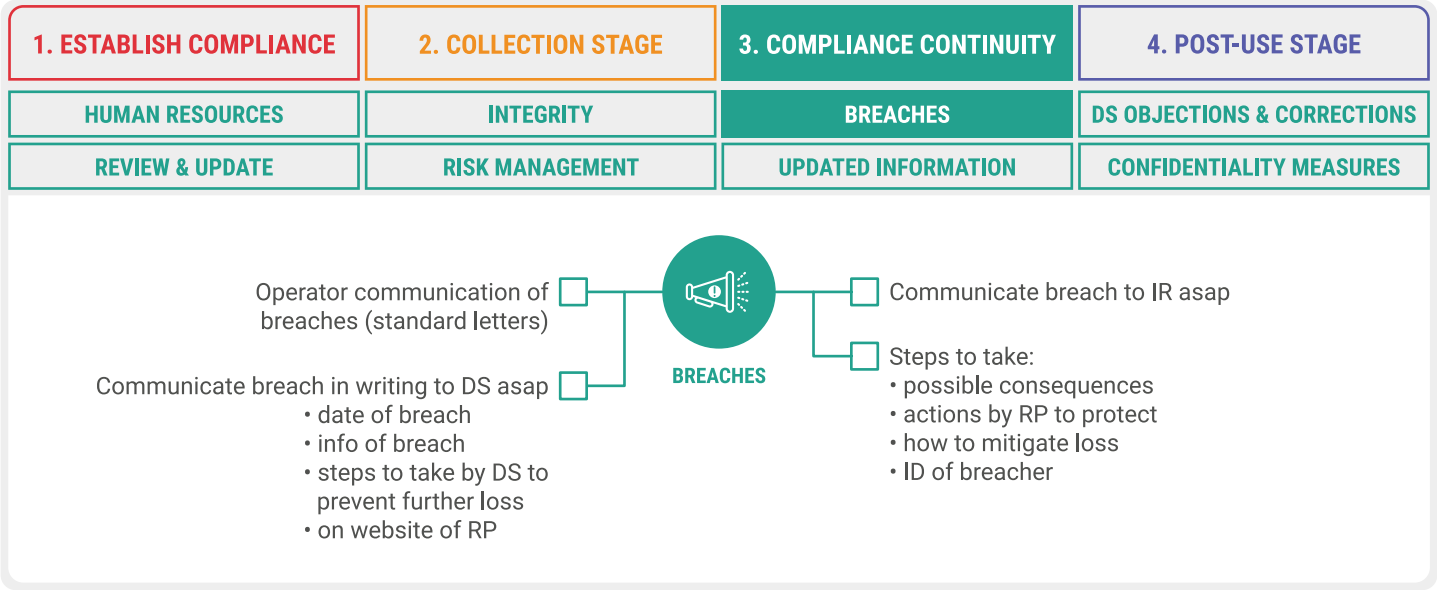


INTEGRITY

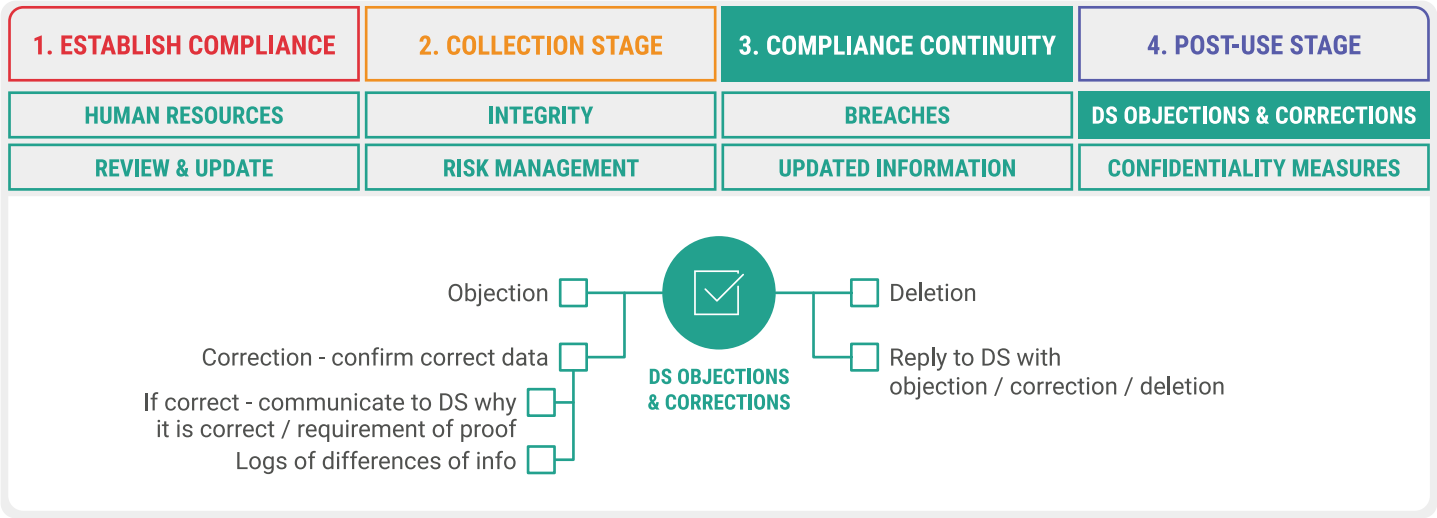


STAGE 3: COMPLIANCE CONTINUITY

BREACHES

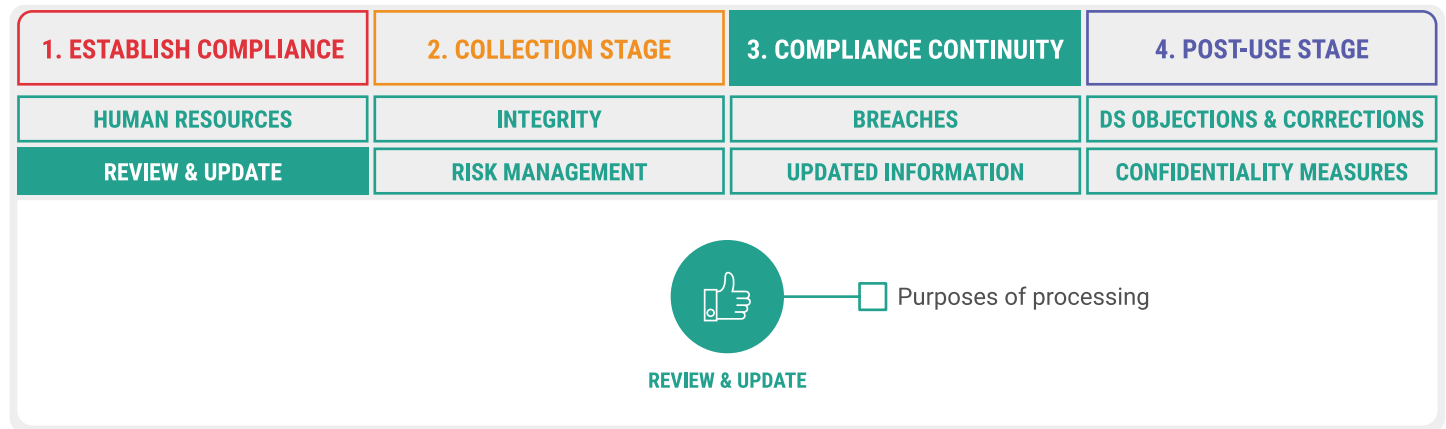


DS OBJECTIONS & CORRECTIONS

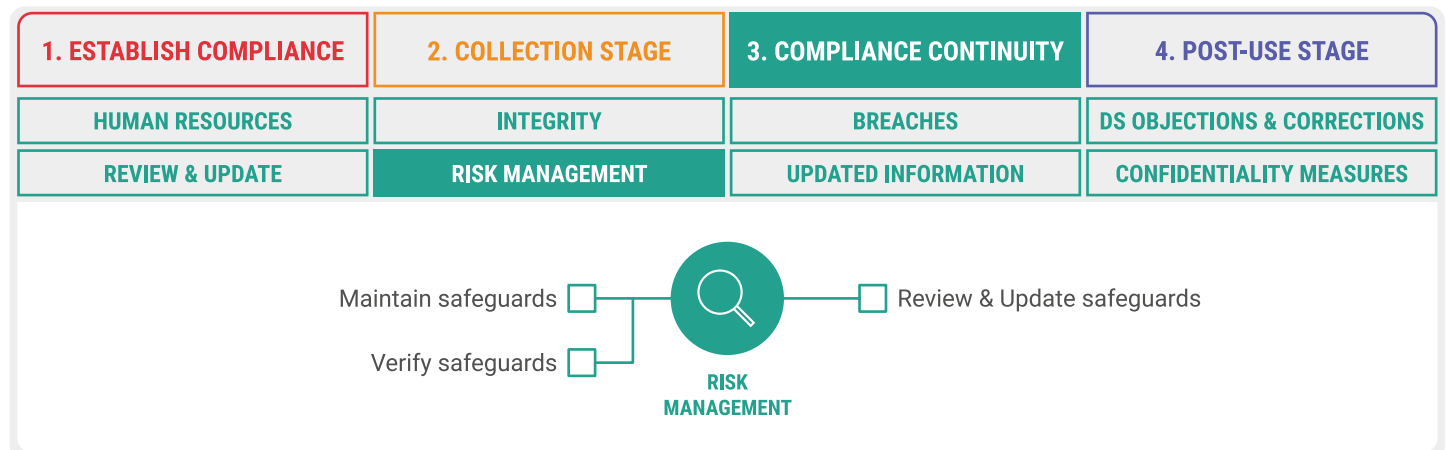


STAGE 3: COMPLIANCE CONTINUITY

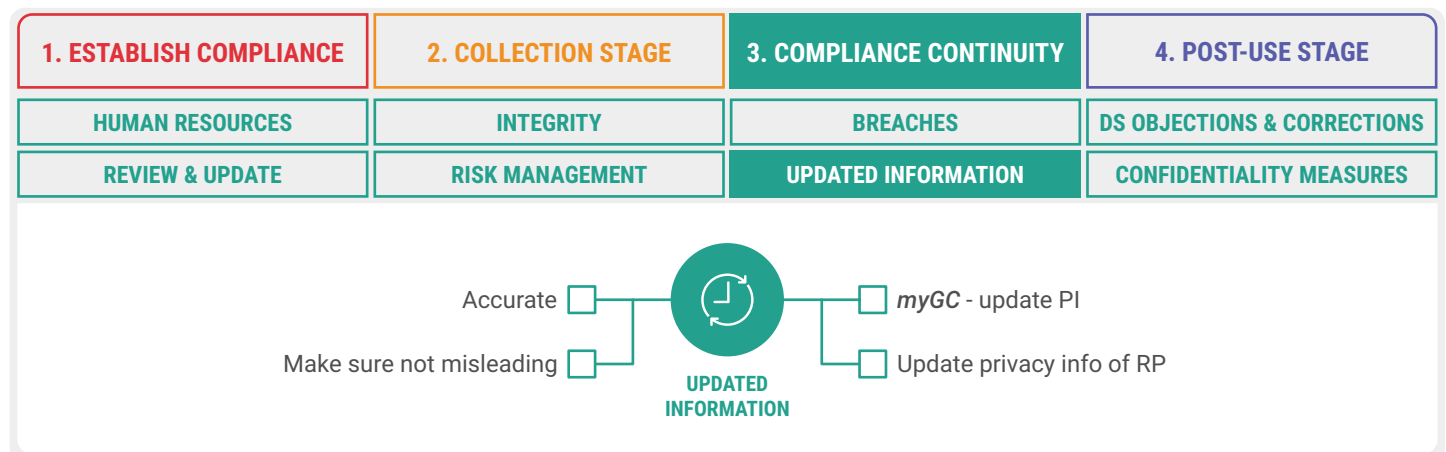
REVIEW & UPDATE



RISK MANAGEMENT

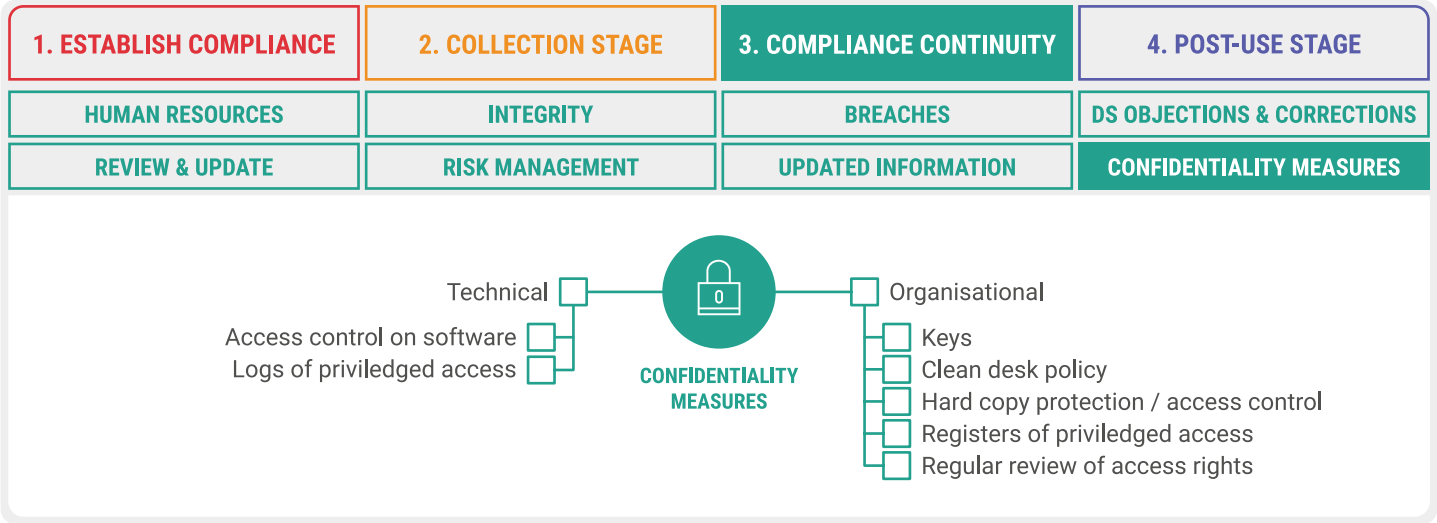


UPDATED INFORMATION



STAGE 3: COMPLIANCE CONTINUITY

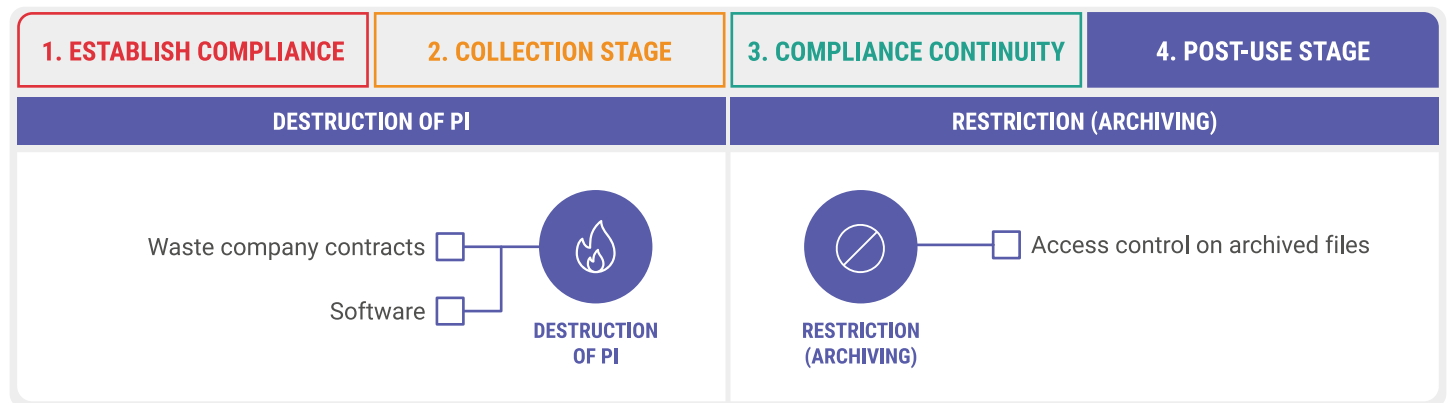
CONFIDENTIALITY MEASURES



STAGE 4: POST-USE STAGE

DESTRUCTION OF PI

RESTRICTION (ARCHIVING)





To view and register for online courses:



www.goodx.healthcare/events

For any enquiries:



courses@goodx.co.za